



Milner Close, Watford, WD25 7DB
£1,750 PCM

Clements Estate Agents are delighted to market this charming TWO bedroom bungalow, situated in this ideal location. The property has gone under full redecoration throughout, promising perfect condition upon tenancy start date. This rarely available home is situated in this quiet close, nearby to good schools, local shops and brilliant transport links. Comprising of two good size bedrooms, modern shower room, utility room, lounge and conservatory. You will also notice, a good size, well kept garden, as well as a garage, offering further storage space. This is not one to miss out on. Available end of March, call to view!

External



Shower Room 6'6" x 6'2" (1.99 x 1.89)



Bedroom 1 12'11" x 10'9" (3.95 x 3.30)



Lounge 16'5" x 12'1" (5.00m x 3.68m)



Bedroom 2 10'8" x 9'4" (3.25m x 2.84m)



Conservatory 12'5" x 7'5" (3.78m x 2.26m)



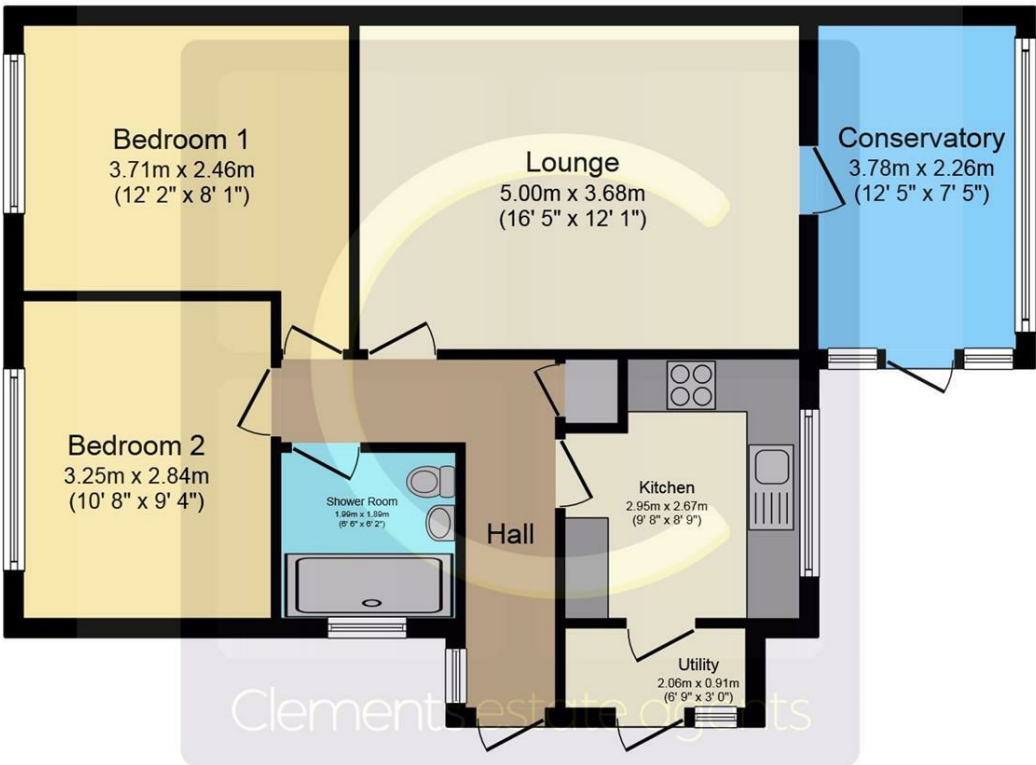
Garden



Garage



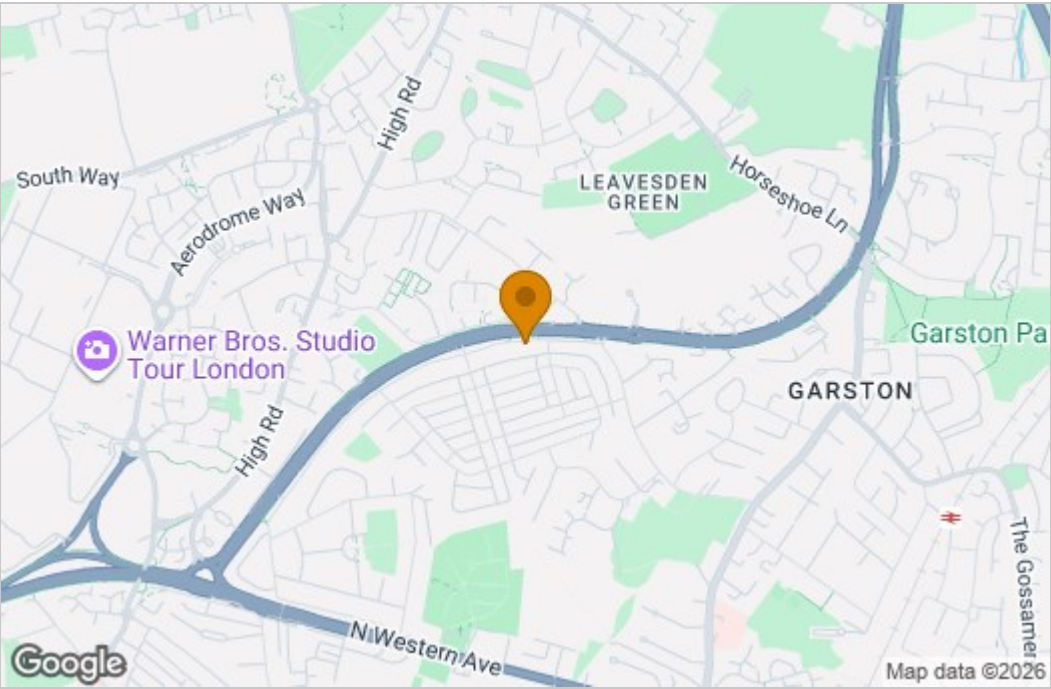
Floor Plan



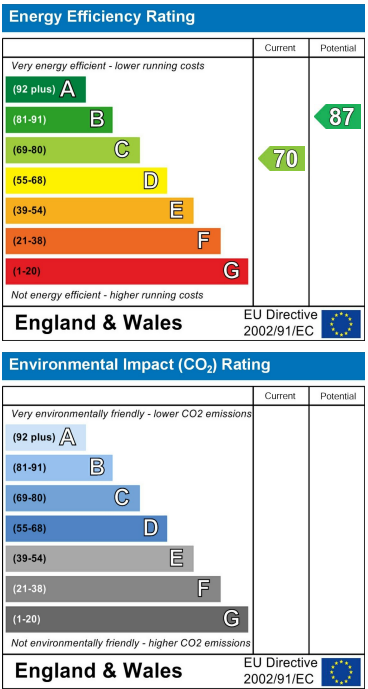
Floor Plan

Total floor area 71.6 sq.m. (771 sq.ft.) approx
This plan is for illustration purposes only and may not be representative of the property. Plan not to scale. Powered by PropertyBox

Area Map



Energy Efficiency Graph



These particulars, whilst believed to be accurate are set out as a general outline only for guidance and do not constitute any part of an offer or contract. Intending purchasers should not rely on them as statements of representation of fact, but must satisfy themselves by inspection or otherwise as to their accuracy. No person in this firm's employment has the authority to make or give any representation or warranty in respect of the property.